



Korakonui School Community Newsletter

734 Wharepuhunga Road, R D 3, Te Awamutu

Ph: 07 8722762 Email: office@korakonui.school.nz

Website: www.korakonui.school.nz

KORAKONU I SCHOOL

Welcome to our Korakonui Community Newsletter for Term 4, 2023

Our highlights so far this term ...



Ag Day 2023

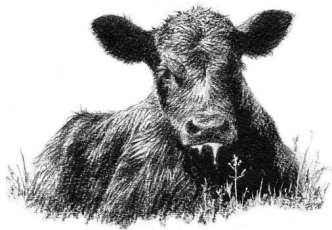


Mangawhio & Wharepuhunga Camp



Our mural by artist Joe McMenamin

Korakonui School Stock Scheme



'Thank you' to this year's generous donors and supporters. **Collection of weaned calves will be on Friday 17th November.** We do require assistance please with the collection. If you have a ute, a trailer ... and a spare couple of hours, that would be so appreciated. *Our Korakonui branded stock scheme calf tags were kindly donated by Z tag 'thank you'.*



Please phone Lance Gower on 021 445 853 with animal pick-up details or if you can help with collection.

8 November 2023

Dear Kōrakonui Community,

We find ourselves already halfway through Term 4, it's incredible how swiftly this year is passing by! Our school has been buzzing with activity, from Ag Day and Group Day to the Waikato Show, our Wharepuhunga/Mangawhio School camp at Papamoa, and our exciting school athletics day.



With just five more weeks to go until the Christmas break, there are still plenty of thrilling events on the horizon. Still to happen this term is;

- **Book Fair:** Our school book fair is right around the corner, starting next week, and we're especially looking forward to our Book Character evening on Wednesday, 15th November, where our students will showcase their incredible costumes. This event is a great opportunity to raise funds for new library books across all class libraries.
- **Junior Athletics:** Our junior students will be heading off to Ngahinapouri School on 21st November for their junior athletics day. This cluster event is always an exciting day out for our junior students.
- **Hamilton Zoo:** For our Year 1-3 students in Te Kawa and Mangatutu Classes, we have an exciting trip to Hamilton Zoo planned on 15th November. The students are really looking forward to travelling by bus and seeing all the animals.
- **Senior Formal:** On Tuesday 28th November we have our Senior Formal. This is always a huge night for our senior students and a highlight of the year.
- **Ngahape Camp:** This year Ngahape Class are travelling to Karakariki Christian Camp near Raglan, for an overnight camp. After seeing the older classes camps earlier in the year, the excitement is nearly here for our Ngahape students!
- **Joe McMenamin Mural:** We're thrilled to have Joe on site this week, working with a group of senior students to create a beautiful mural of the Puketoki Maunga, commonly known as Lethbridge's Hill. Once completed, the mural will be displayed on the wall by the office entrance. We will be sharing progress photos via our school's Facebook page if you want to track the progress of this exciting development.
- **Prize-giving:** Before we know it, we'll be bidding farewell to our Year 8 students at our Prize-giving on Friday, 15th December, where we will also celebrate many of our greatest achievements from our students for the 2023 school year.

Lastly, you may have noticed our school bustling with more activity than usual. Our school roll has been

steadily growing in recent months, leading to the opening of a seventh classroom for 2024. The new classroom, Room 4 (next to Ngahape), will be named Lethbridge Class. The school board has completed the appointments process, welcoming two new teaching staff members for next year. A warm welcome to Mrs. Heather Cork and Mr. Lewis Morgan, who will be joining our teaching team. Here are the classes for 2024:

- Bayley Class (Year 7-8): Mrs. Burrows
- Wharepuhunga Class (Year 5-6): Mrs. Gera
- Mangawhio Class (Year 5-6): Miss Powell
- Lethbridge Class (Year 4): Mr. Morgan & Mrs. Knight
- Ngahape Class (Year 2-3): Ms. Leather
- Mangatutu Class (Year 1-2): Mrs. Cork
- Te Kawa Class (Year 1): Mrs. Graham

Exciting times lie ahead, and we look forward to your continued support and involvement in our vibrant school community.

With warm regards,
Tom Cochrane
Principal

**IT'S SCHOLASTIC
BOOK FAIR
TIME!**

Book Fair and Book Character Day

Our annual Scholastic Book Fair starts next week (13th to 17th November). This is our annual fundraiser to raise funds for new library books. The Book Fair will be open for half an hour before and after school each day for parents and community to view and purchase books in our Multi Purpose Room.

On Wednesday 15th November we are running a book character evening starting at 6.30pm.

We invite families to our evening - students come dressed as a favourite book character! The evening will start with a parade and fashion show, with spot prizes and prizes for the best dressed. This is a great opportunity for parents to come and see the character costumes and purchase books from the Book Fair.



Korakonui School

Dates for your calendar

- **Thursday 9 November** - BoT Meeting 5.30pm
- **Friday 10 November** - LWS Athletics
- **13 - 17 November** - Book Fair Week - MPR
(Wed 15th Nov - Book Character Evening - 6.30pm MPR)
- **Tuesday 16 November** - Tech in Otorohanga for Yr 7/8
- **Thursday 16 November** - IMMS HPV Dose2
- **Tuesday 21 November** - Junior Athletics at Ngahinapouri
- **Tuesday 28 November** - Tech in Otorohanga for Yr 7/8
- **Tuesday 28 November** - Year 7/8 Formal
- **30 Nov / 1 Dec** - Ngahape Camp
- **Tuesday 12 December** - Year 8 Dinner at Storyteller
- **Thursday 14 December** - BoT Meeting 5.30pm
- **Friday 15 December** - Prizegiving - last day of school - buses run as normal

School Community Pool Keys

Once the weather settles, we hope to be swimming in our beautiful refurbished pool before the end of this term! Pool keys are available to our community from Friday 1st December - \$80 for the summer season, with a \$10 refund when the key is returned at the end of the season. Please reserve your key by contacting Faye at the school office. office@korakonui.school.nz



Term Dates 2024 Plus Public Holidays During Term Time

- Term 1 – Wednesday 31 January - Yr 7/8 Only Leadership Day**
Thursday 1 February - Thursday 12 April (11 weeks)
Public Holidays: Tuesday 6 February Waitangi Day
Easter: Friday 29 March Good Friday
Monday 1 April Easter Monday
Tuesday 2 April Easter Tuesday
- Term 2 - Monday 29 April - Friday 5 July (10 weeks)**
Public Holidays: Monday 3 June King's Birthday
Friday 28 June Matariki
- Term 3 - Monday 22 July - Friday 27 September (10 weeks)**
- Term 4 - Monday 14 October - Monday 13 December (9 wks)**
Public Holiday: Monday 28 October Labour Day

Korakonui Kickstart

Our Before School Programme

The Korakonui Kickstart programme will occur for the 3 weeks leading up to each child's 5th birthday, or entry to school. These sessions run on Friday mornings and are based within Te Kawa class. This programme is designed to help the children prepare for school, to allow them to build relationships with the teaching staff, and their fellow students, as well as their older peers within Mangatutu class.

If you are interested in your child taking part in this programme, please contact the school office or our Principal, who will be able to give additional information.

NB: Korakonui School does not have cohort entry
Learners can start from 5 years old.



AG DAY 2023

Congratulations to all the students who took part in Ag Day, Group Day and Waikato Show 2023. The dedication and effort you put into raising and prepar-

vetora
Your local vet club

ing your animals for the day is a real credit to all of you. With approximately 60 entrants for our day, this annual rural tradition is always well supported by our community and sponsors. We thank our sponsors for their continued support, you play a major part in bringing our community together. **Our major sponsor Vetora (thank you Grant), VE Vets, Greenlea Meats, Fern Energy, Farm Source, Open Country Dairy, G & T Honeyfield, E & F Kay, Kiwi Piloting, L & M Gower, S & A Andersen, Hoops & Scoops, FIL, Dairy NZ, FMG, LIC.** As always, there are so many of our people behind the scenes who bring this day together 'Thank you all'.

Waikato Show is the 'next level' in competition. Students Gemma, Evie, Shane, Rosie and Marie competed at the Show on Friday 27 October, amongst other top class animals from all over the Waikato.



Results - Calves Gemma Honeyfield - 4th Leading, 5th Rearing, 3rd Beef type; Shane Honeyfield - 6th Leading, 4th Rearing, 4th Late Beef Type; Evie Milne - 1st Leading.

Results - Lambs Rosie Morgan - 5th MOP.
Well done to you all.



The results for our Ag Day and Group Day are on our school website
<https://www.korakonui.school.nz/>

Korakonui Community Directory



027 444 2776 F8FENCING.CO.NZ

A E D
AUTOMATED EXTERNAL DEFIBRILLATOR




ON SITE

Public Access Defibrillator

located on outside wall at
Whakamaramara Marae
655 Wharepuhunga Road
(town side of Korakonui School)

'Caring for our community'



**TOPCOW®
TOPCALF®**

Pete Yeoman
TSM South Waikato

M. +64 21 537 955 pyeoman@coprice.co.nz

**Tailored meal solutions
Dairy Cow, Dairy Sheep, Dairy Goat**

KJR CONTRACTING (2010 Ltd)



KELVIN RICHARDSON 027 4970080
KJRCONTRACTING2010@GMAIL.COM  KJR-CONTRACTING-2010-LTD

Loader Wagons ~ 3 Trucks ~ Digger
Big square/round bales hay or silage ~ conventional hay or silage
Maize complete job ~ contact Kelvin for all seasonal needs

Here's what make Property Brokers Property Management so great...

1  Property tenanted, or we'll pay

If we have not signed up a tenant for your property within 28 days of it being available we will pay the rent.

2  No rent arrears, or we'll pay

If your tenant won't pay the rent, we will!

3  Great service, or we'll pay

We pride ourselves on our great service. If you are not happy and we cannot resolve the problem, we'll pay your management fee!





Plus a Property Manager born and bred in Te Awamutu who has great knowledge and total team backing from the wider Property Brokers network.

Nicky Pratt Property Manager | M 027 279 6534 | E nicky.pratt@pb.co.nz

Property Brokers
Property Management



RECYCLING STATION @ KORAKONU

Located by the Bus Shed at Korakonui School

Bottles - Plastics - Cardboard

Only plastics with No 1 or No 2 are recyclable

PLEASE NOTE: If the recycling bottle bin is full - please change the bottle bin by entering through the end door.

Thank You for keeping this area clean



recycle
it's easy!



WHAREPUHUNGA Playcentre


SESSION DAYS
Tuesday & Friday mornings - Birth to 6 years old
and
Monday mornings - 4 to 6 years old

743 Wharepuhunga Road
opposite Korakonui School

Call in or phone
07 872 2540

FUN, FUN, FUN FOR EVERYONE

QUALITY EARLY CHILDHOOD EDUCATION IN YOUR LOCAL COMMUNITY

 Like our Facebook page

Wharepuhunga Playcentre